



# CrashPlan Professional

Secure Data Backup and Recovery for Businesses and Creators



## Why CrashPlan:



>900k Users



>100B Files Recovered Annually



>1.4M Devices



Trusted by over 50,000 Businesses

## CrashPlan Professional

CrashPlan Professional protects your time, effort, and ideas by shielding you against data loss caused by mishaps, disasters, or ransomware. With automatic backups, unlimited file versioning, and no caps on data storage, you'll never have to recreate a file again. Powerful, user-friendly features empower small-to-medium businesses and individuals to set up backups and restore files without an IT expert.

CrashPlan Professional makes it easy to:

- ✓ Restore deleted or corrupted files
- ✓ Migrate data to a new device
- ✓ Recover files after a ransomware attack

## Testimonials

"CrashPlan is the gold standard for cloud backup. It can be deployed silently to all my endpoints, it is very easy to use (both the app and the web admin console). Their support is great at identifying problems, patterns and resolves issues quickly."

— ADRIEN B,  
MAC SYSTEMS ADMIN II, NONPROFIT

"I have all the research for my book and my entire podcasting history, more than 2,000 episodes, safe and secured thanks to CrashPlan. It's one of the most fundamental apps in my workflow, mainly because I never have to think about it."

— BRIAN MCCULLOUGH,  
PODCAST HOST

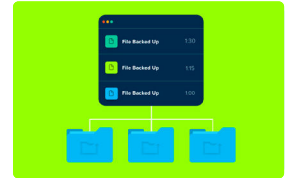


### Securely Protect All Your Ideas

CrashPlan Professional automatically encrypts all new or updated files on your computer every 15 minutes and securely sends them to our cloud. Every user has their own encryption key for added security. From raw images to CAD drawings or simple text documents, all your work and ideas are safe and ready for when something goes wrong.

### Streamline Your Workflow

With automatic backup, users never need to remember to upload files to a particular location. And our lightweight agent works silently and efficiently in the background so you're never slowed down. Focus on creating, and CrashPlan does the rest.



### Meet Compliance Requirements

CrashPlan Professional ensures your business meets stringent data compliance standards with robust encryption and a suite of security certifications. And we can sign a Business Associates Agreement for HIPAA compliance.

## Why CrashPlan Professional?

### Unlimited Storage, Predictable Pricing

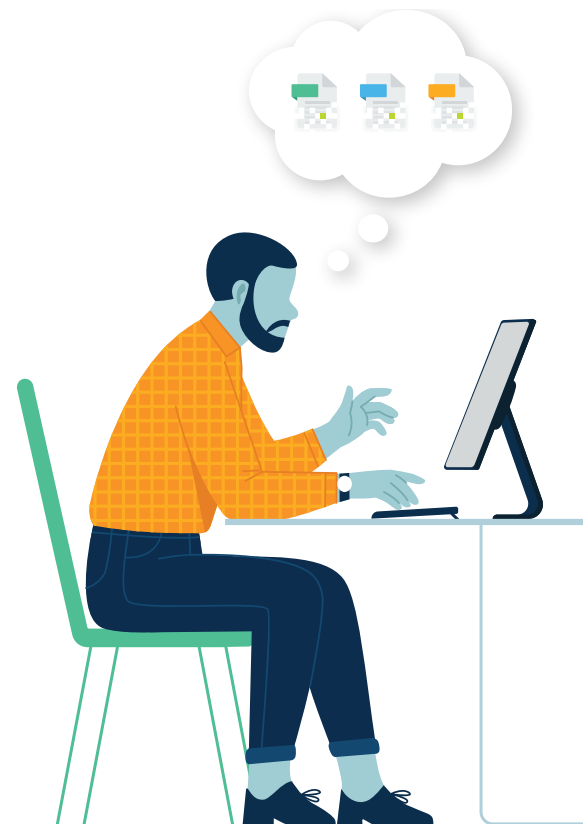
CrashPlan Professional offers unlimited data without upsells or hidden fees. Unlimited file versioning and 90-day deleted file retention means you don't have to be frugal about what data you save – so you know you can get back exactly the data you need.

### Multi-User Support

CrashPlan Professional supports multiple users under one account – which makes it ideal for businesses. Each user can back up one or two computers, plus an external drive. Per-user encryption keys give organizations an added layer of protection.

### The Right Balance of Ease and Power

CrashPlan Professional is a breeze to set up and maintain. By default, we back up all user-generated files and empower end-users to backup and restore files on your own through a simple web interface. IT teams also have the option to take a more hands-on approach, with configurable backup policies, customizable backup selections, and admin-push file restores. You can also integrate with your single sign-on solution.



Start your free 14-day trial at [crashplan.com/crashplan-professional](https://crashplan.com/crashplan-professional)